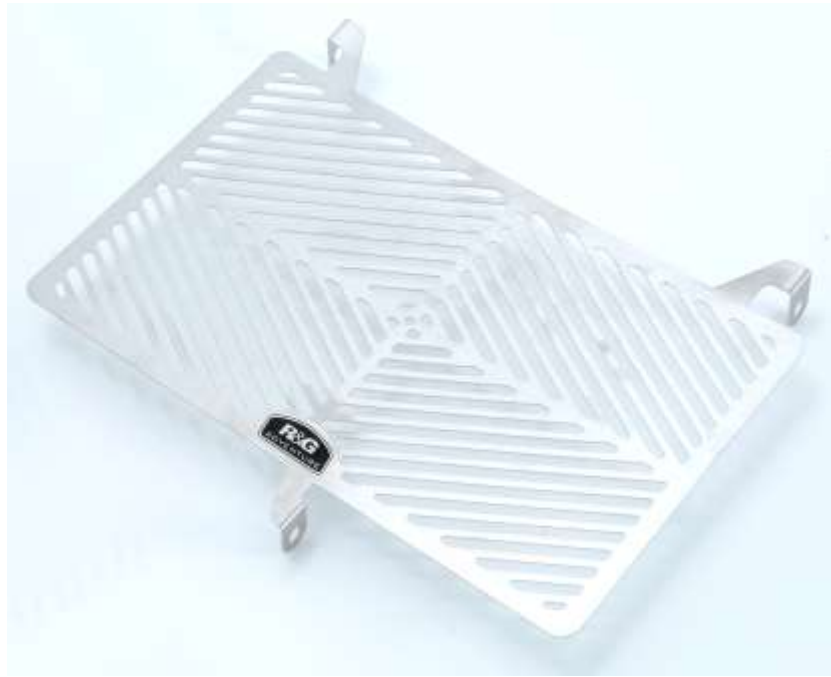




**Fitting Instructions for SRG0022 Radiator Guard**  
**YAMAHA XT660Z TENERE '08-**



**In This Kit There Should Be**  
**1x Radiator Guard (SRG0022)**  
**2x 100mm Lengths of self-adhesive Foam**



Picture 1



Picture 2



Picture 3



Picture 4



Picture 5



Picture 6

### **TOOLS REQUIRED**

- Socket set to include 4 & 5mm A/F socket & wrench.

### **FITTING INSTRUCTIONS**

- To fit the radiator guard to the bike cut the foam strip provided into 10mm wide pieces and stick them to the back of the radiator guard frame, so that they sit between the radiator guard and the radiator.
- Remove the plastic side panel by removing the four bolts on the side and one push rivet on the front bottom edge, as shown in picture 1.
- Remove the two bolts that secure the bottom of the plastic grille on the radiator in place, as shown in picture 2.
-



- Remove the two bolts that secure the top of the plastic grille on the radiator in place, as shown in picture 3.
- Offer the R&G Radiator Guard into place on the bike by gently pulling the plastic grille away from the radiator and sliding the radiator guard into place from the right side of the bike, as shown in picture 4.
- With the radiator guard correctly located, re-fit the two lower mounting bolts, ensuring they go through the lower mounting holes of the radiator guard, as shown in picture 5.
- Ensure the radiator guard is correctly fitted and the bolt heads are located within the cut-outs, before re-fitting the top bolts to secure the top of the plastic grille in place.
- Re-fit the side panel and tighten all bolts evenly.

ISSUE 1 31/10/2013 (AR)

#### **CONSUMER NOTICE**

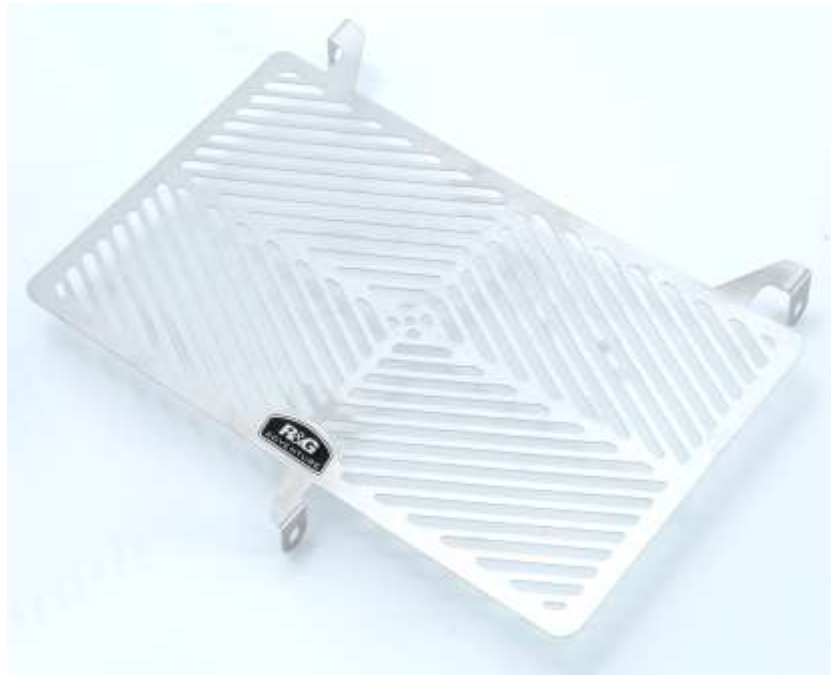
The catalogue description and any exhibition of samples are only broad indications of the Products and R&G may make design changes which do not diminish their performance or visual appeal and supplying them in such state shall conform to the order. The Buyer acknowledges no representation or warranty (other than as to title) has been given or will apply to the Products other than those in R&G's order or confirmation and the Buyer confirms it has chosen the Products as being of merchantable quality and suitable for its particular purposes. Where R&G fits the Products or undertakes other services it shall exercise reasonable skill and care and rectify any fault free of charge unless the workmanship has been disturbed. The Buyer is responsible for ensuring that the warranty on the motorcycle is not affected by the fitting of the Products. On return of any defective Products R&G shall at its option either supply a replacement or refund the purchase money but shall not be liable if the Products have been modified or used or maintained otherwise than in accordance with R&G's or manufacturer's instructions and good engineering practice or if the defect arises from accident or neglect. Other than identified above and subject to R&G not limiting its liability for causing death and personal injury, it shall not be liable for indirect or consequential loss and otherwise its liability shall be limited to the amounts paid by the Buyer for the Products or the fitting or service concerned. These terms do not affect the Buyer's statutory rights.

#### **R&G RACING RETURNS POLICY (NON-FAULTY GOODS)**

Returns must be pre-authorized (if not pre-authorized the return will be rejected). Goods may only be returned direct to us if they were purchased direct from us (customer must prove if necessary). Otherwise to be returned to original vendor. Goods must be in re-sellable condition, in the opinion of R&G Racing. All returns are subject to a 25% restocking and handling fee (25% of the gross value exc. P&P – at the prevailing price at time of purchase). The customer must pay any and all carriage charges. No returns of discontinued products, unless within 14 days of purchase. This policy does not affect your statutory rights and does not refer to faulty goods.



**INSTRUCTIONS DE MONTAGE POUR SRG0022 Grille de protection radiateur**  
**YAMAHA XT660Z TENERE '08-**



**Le kit doit contenir :**  
**1x Grille de protection radiateur (SRG0022).**  
**2x 100mm Mousse autocollante**



Photo 1



Photo 2



Photo 3



Photo 4



Photo 5



Photo 6

#### **Outils requis**

- Jeu de clés 4mm et 5mm.

#### **Instructions de montage :**

- Couper la mousse autocollante en bandeaux de 10mm de large et collez les au bas du cadre de support protection radiateur, de façon à ce qu'ils se retrouvent entre la grille de protection et le radiateur.
- Enlever les 4 boulons qui fixent la grille sur le coté et un rivet poussoir sur la partie basse avant (photo 1).



- Remove the two bolts that secure the bottom of the plastic grille on the radiator in place, as shown in photo 2.
- Enlever les 2 boulons qui fixent le haut de la grille de plastic sur le radiateur en place (photo 3).
- Mettre la grille de radiateur R&G en place en extirpant doucement la grille en plastic du radiateur et en glissant la grille de protection depuis le coté droit de la moto (photo 4).
- Une fois la grille R&G en place, remettre les 2 boulons inférieurs, en veillant à ce qu'ils aillent à travers les trous supports inférieurs de la grille de protection (photo 5).
- Veiller à ce que la grille de protection soit correctement montée et que toutes les têtes de boulons soient placées dans les découpes, avant de remettre les boulons pour fixer le haut de la grille de protection en place.
- Remettre le cache puis serrer tous les boulons de façon égale.

ISSUE 1 31/10/2013 (AR)

#### **CONSUMER NOTICE**

The catalogue description and any exhibition of samples are only broad indications of the Products and R&G may make design changes which do not diminish their performance or visual appeal and supplying them in such state shall conform to the order. The Buyer acknowledges no representation or warranty (other than as to title) has been given or will apply to the Products other than those in R&G's order or confirmation and the Buyer confirms it has chosen the Products as being of merchantable quality and suitable for its particular purposes. Where R&G fits the Products or undertakes other services it shall exercise reasonable skill and care and rectify any fault free of charge unless the workmanship has been disturbed. The Buyer is responsible for ensuring that the warranty on the motorcycle is not affected by the fitting of the Products. On return of any defective Products R&G shall at its option either supply a replacement or refund the purchase money but shall not be liable if the Products have been modified or used or maintained otherwise than in accordance with R&G's or manufacturer's instructions and good engineering practice or if the defect arises from accident or neglect. Other than identified above and subject to R&G not limiting its liability for causing death and personal injury, it shall not be liable for indirect or consequential loss and otherwise its liability shall be limited to the amounts paid by the Buyer for the Products or the fitting or service concerned. These terms do not affect the Buyer's statutory rights.

#### **R&G RACING RETURNS POLICY (NON-FAULTY GOODS)**

Returns must be pre-authorized (if not pre-authorized the return will be rejected). Goods may only be returned direct to us if they were purchased direct from us (customer must prove if necessary). Otherwise to be returned to original vendor. Goods must be in re-sellable condition, in the opinion of R&G Racing. All returns are subject to a 25% restocking and handling fee (25% of the gross value exc. P&P – at the prevailing price at time of purchase). The customer must pay any and all carriage charges. No returns of discontinued products, unless within 14 days of purchase. This policy does not affect your statutory rights and does not refer to faulty goods.

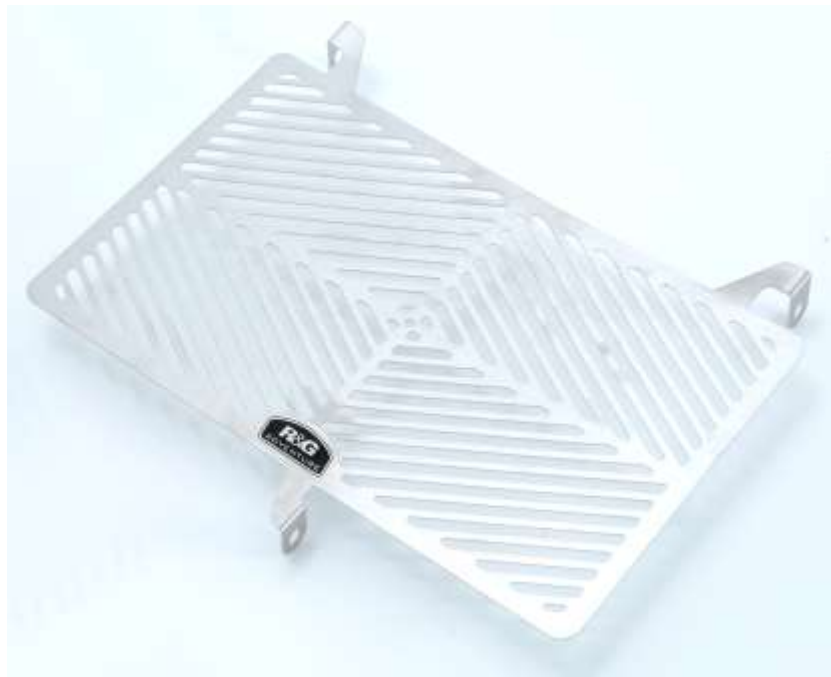
R&G Racing

Unit 1, Shelley's Lane, East Worldham, Alton, Hampshire, GU34 3AQ

Tel: +44 (0)1420 89007 Fax: +44 (0)1420 87301 [www.rg-racing.com](http://www.rg-racing.com) Email: [info@rg-racing.com](mailto:info@rg-racing.com)



**Montageanleitung für den SRG0022 Kühlerschutz**  
**YAMAHA XT660Z TENERE '08-**



**Dieser Kit enthält**  
**1x Kühlerschutz (SRG0022)**  
**2x 100mm selbstklebende Schaumstoffstreifen**



Abbildung 1



Abbildung 2



Abbildung 3



Abbildung 4



Abbildung 5



Abbildung 6

### **SIE BENÖTIGEN FOLGENDES WERKZEUG**

- Steckschlüssel-Satz inkl. 4 & 5mm Steckschlüssel

### **MONTAGEANLEITUNG**

- Um den Kühlerschutz am Motorrad zu montieren, schneiden Sie zuerst die mitgelieferten Schaumstoff-Streifen in 10 mm breite Streifen und kleben Sie diese auf der Rückseite des Kühlerschutzrahmens, so dass sie zwischen dem Kühlerschutz und dem Kühler angebracht sind.
- Entfernen Sie die Plastikverkleidung indem Sie die vier Schrauben an der Seite und die Plastikniete unten an der unteren Kante entfernen – siehe Abbildung 1.
- Entfernen Sie die zwei Schrauben, die das Plastikgitter unten am Kühler befestigen – siehe Abbildung 2.





- Entfernen Sie die zwei Schrauben, die das Plastikgitter oben am Kühler befestigen – siehe Abbildung 3.
- Den R&G Kühlerschutz in Position bringen, indem Sie das Plastikgitter vorsichtig vom Motorrad wegziehen und den Kühlerschutz von rechts in Position schieben – siehe Abbildung 4.
- Wenn der Kühlerschutz in Position ist, montieren Sie die zwei unteren Montageschrauben – bitte darauf achten, dass die Schrauben durch die unteren Montagelöcher des Kühlerschutzes montiert werden – siehe Abbildung 5.
- Überprüfen Sie, dass der Kühlerschutz ordnungsgemäß montiert ist und die Schraubenköpfe innerhalb der Ausschnitte sind, bevor Sie die oberen Schrauben wieder montieren und das Plastikgitter oben in Position befestigen.
- Montieren Sie die Plastikverkleidung wieder und ziehen Sie alle Schrauben fest.

AUSGABE 1 31/10/2013 (AR)

#### **CONSUMER NOTICE**

The catalogue description and any exhibition of samples are only broad indications of the Products and R&G may make design changes which do not diminish their performance or visual appeal and supplying them in such state shall conform to the order. The Buyer acknowledges no representation or warranty (other than as to title) has been given or will apply to the Products other than those in R&G's order or confirmation and the Buyer confirms it has chosen the Products as being of merchantable quality and suitable for its particular purposes. Where R&G fits the Products or undertakes other services it shall exercise reasonable skill and care and rectify any fault free of charge unless the workmanship has been disturbed. The Buyer is responsible for ensuring that the warranty on the motorcycle is not affected by the fitting of the Products. On return of any defective Products R&G shall at its option either supply a replacement or refund the purchase money but shall not be liable if the Products have been modified or used or maintained otherwise than in accordance with R&G's or manufacturer's instructions and good engineering practice or if the defect arises from accident or neglect. Other than identified above and subject to R&G not limiting its liability for causing death and personal injury, it shall not be liable for indirect or consequential loss and otherwise its liability shall be limited to the amounts paid by the Buyer for the Products or the fitting or service concerned. These terms do not affect the Buyer's statutory rights.

#### **R&G RACING RETURNS POLICY (NON-FAULTY GOODS)**

Returns must be pre-authorized (if not pre-authorized the return will be rejected). Goods may only be returned direct to us if they were purchased direct from us (customer must prove if necessary). Otherwise to be returned to original vendor. Goods must be in re-sellable condition, in the opinion of R&G Racing. All returns are subject to a 25% restocking and handling fee (25% of the gross value exc. P&P – at the prevailing price at time of purchase). The customer must pay any and all carriage charges. No returns of discontinued products, unless within 14 days of purchase. This policy does not affect your statutory rights and does not refer to faulty goods.

R&G Racing

Unit 1, Shelley's Lane, East Worldham, Alton, Hampshire, GU34 3AQ

Tel: +44 (0)1420 89007 Fax: +44 (0)1420 87301 [www.rg-racing.com](http://www.rg-racing.com) Email: [info@rg-racing.com](mailto:info@rg-racing.com)